



statlook

manage your IT & business

1

One Multifunctional IT Management Tool



1

Use one comprehensive tool for IT management and **do not worry** about compatibility or interactions between multiple apps.

2

Connecting Two Worlds: IT Department & Business



2

Easily share the knowledge on hardware and software management, user activity tracking, and data security, **with non-IT managers.**



3

Three Minutes to Learn
The Intuitive Interface



3

Quick implementation, user-friendly interface and flexibility – immediate improvement of your IT Asset Management in 5 main areas:



Hardware & Software Management

Uplook & statlook are professional systems for software legality control (license compliance) which offer the functionality of license management and professional remote audits of software, media files or fonts.

Hardware asset management (which may also involve any other equipment) has never been so easy allowing the reporting of all your fixed assets as well as well-planned purchases. Automated remote hardware asset management system renders the task highly timesaving.



User Activity Monitoring

We compile multiple detailed information concerning the work of users, such as applications used, Web sites visited, work breaks, documents printed or operations on external hard drives, pen drives, memory cards, etc.

The data from longer time spans is presented in the form of clear reports and enables highly accurate evaluation of risks and bottlenecks in our organization.



Data Leakage Prevention

Gathering data on the use of external data storage devices, monitoring users' activity and performing scheduled audits makes the infrastructure safer.

Still, if necessary, we can block some applications, www sites or the use of removable media. Using statlook DLP features IT personnel can efficiently increase the security of data and infrastructure.



Remote PC Management

Auditing and asset management is carried out remotely on all computers connected to the corporate network, which guarantees substantial timesaving!

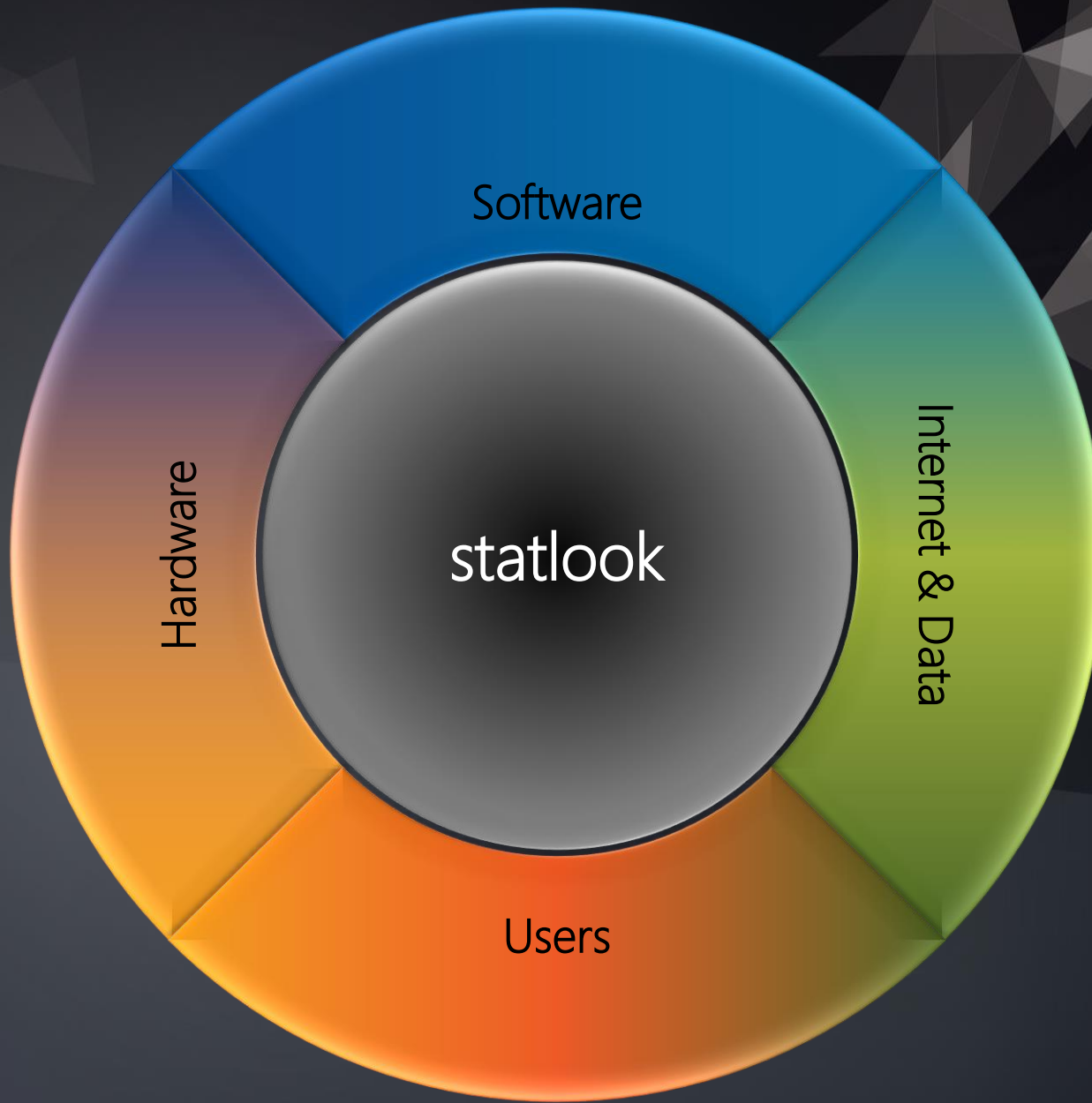
Moreover, all computers can be managed remotely, without the need to change location, which is particularly beneficial in large buildings or departments in multiple locations. Pure comfort and saving your precious time!



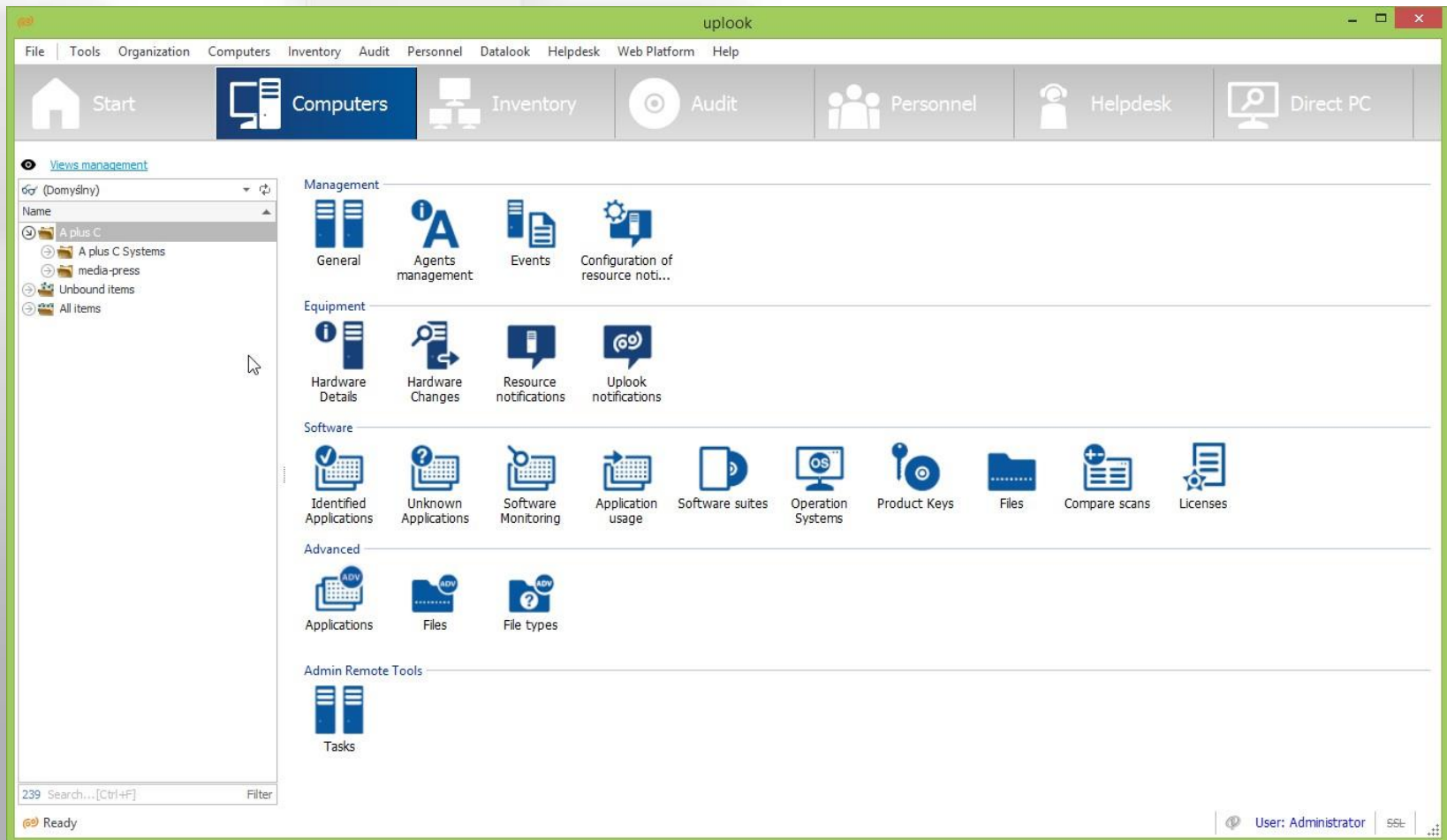
Helpdesk Online

Online and desktop support allows you to easily manage your daily duties and user requests as well as resolve problems and assign tickets to others.

Use any device with Internet browser to help your users. Let the users use personalized knowledge base and check the current status of their tickets both online and with a desktop Assistant app.



Hardware management



Inventory Management

uplook

File | Tools | Organization | Computers | Inventory | Audit | Personnel | Datalog | Helpdesk | Web Platform | Help

Start | Computers | **Inventory** | Audit | Personnel | Helpdesk | Direct PC

Refresh Search Reset view Add Edit Delete Change view Primary, Hardware, Ad... Show sets only Show elements Hide sets

Tools Edit Current View Sets

Easy filter

Location Department Type

Computer [0] Computer Set [3] Desktop (Computer) [9] Furniture [0] Network device [0] Notebook (Computer) [8] Peripherals [0] Phone [1] Printer [3]

Search

Tags Purchase Warranty

From To Quick date Range

Filters < No filter > Save/Edit Elements 28

Enter text to search... Find Clear

Drag a column header here to group by that column

Type	Name	OS	DNS	CPU	HDD [GB]	RAM [GB]	Graphic Card
Printer	DR003						
Tablet (Computer)	iPad5	iOS					
Desktop (Computer)	KRK001	Microsoft Windows 7 Enterprise	R.19	Intel(R) Pentium(R) D CPU 2.80GHz	149	4	Intel(R) 825
Desktop (Computer)	KRK002	Microsoft Windows 7 Enterprise	R.36	Intel(R) Core(TM)2 Duo CPU E6750 @ 2.66GHz	931	4	Radeon X15
Desktop (Computer)	KRK003	Microsoft Windows 7 Enterprise	R.17	Intel(R) Core(TM)2 Duo CPU E8400 @ 3.00GHz	298	4	ATI Radeon
Desktop (Computer)	KRK004	Microsoft Windows 7 Enterprise	R.16	Intel(R) Core(TM)2 Duo CPU E8400 @ 3.00GHz	298	4	ATI Radeon
Notebook (Computer)	KRK004	Microsoft Windows 7 Enterprise	AgaG.media-press.tv	Genuine Intel(R) CPU T2500 @ 2.00GHz	74,5	2	NVIDIA Qua
Notebook (Computer)	KRK005	Microsoft Windows 7 Enterprise	R.15	Intel(R) Core(TM)2 Duo CPU E8400 @ 3.00GHz	298	4	ATI Radeon
Notebook (Computer)	KRK006	Microsoft Windows 7 Professional	R35.media-press.tv	Intel(R) Core(TM) i7 CPU 870 @ 2.93GHz	298	8	ATI FirePro
Notebook (Computer)	KRK007	Microsoft Windows 7 Professional	R.44	Intel(R) Xeon(R) CPU E31245 @ 3.30GHz	465	8	NVIDIA NVS
Notebook (Computer)	KRK008	Microsoft Windows 7 Enterprise	R.45	Intel(R) Core(TM) i7 CPU 870 @ 2.93GHz	500	16	ATI FirePro
Notebook (Computer)	KRK009	Microsoft Windows 7 Professional	R.37	Intel(R) Core(TM) i7 CPU 870 @ 2.93GHz	298	8	ATI FirePro
Notebook (Computer)	KRK010	Microsoft Windows 7 Professional	R.38	Intel(R) Core(TM) i7 CPU 870 @ 2.93GHz	298	8	ATI FirePro
Notebook (Computer)	KRL08	Microsoft Windows 7 Enterprise	KRL08.media-press.tv	Intel(R) Core(TM)2 Duo CPU T7250 @ 2.00GHz	141,6	4	NVIDIA GeF
Desktop (Computer)	KTW001	Microsoft Windows 7 Professional	R.39	Intel(R) Core(TM) i7 CPU 870 @ 2.93GHz	298	8	ATI FirePro
Desktop (Computer)	KTW002	Microsoft Windows 7 Professional	R.40	Intel(R) Core(TM) i7 CPU 870 @ 2.93GHz	298	8	ATI FirePro
Desktop (Computer)	KTW003	Microsoft Windows 7 Professional	R.41	Intel(R) Core(TM) i7 CPU 870 @ 2.93GHz	298	8	ATI FirePro
Desktop (Computer)	KTW004	Microsoft Windows 7 Professional	R.42	Intel(R) Core(TM) i7 CPU 870 @ 2.93GHz	298	8	ATI FirePro
Desktop (Computer)	KTW005	Microsoft Windows 7 Professional	R.43	Intel(R) Core(TM) i7 CPU 870 @ 2.93GHz	298	8	ATI FirePro
VDU	MON001						
VDU	MON002						
VDU	MON003						

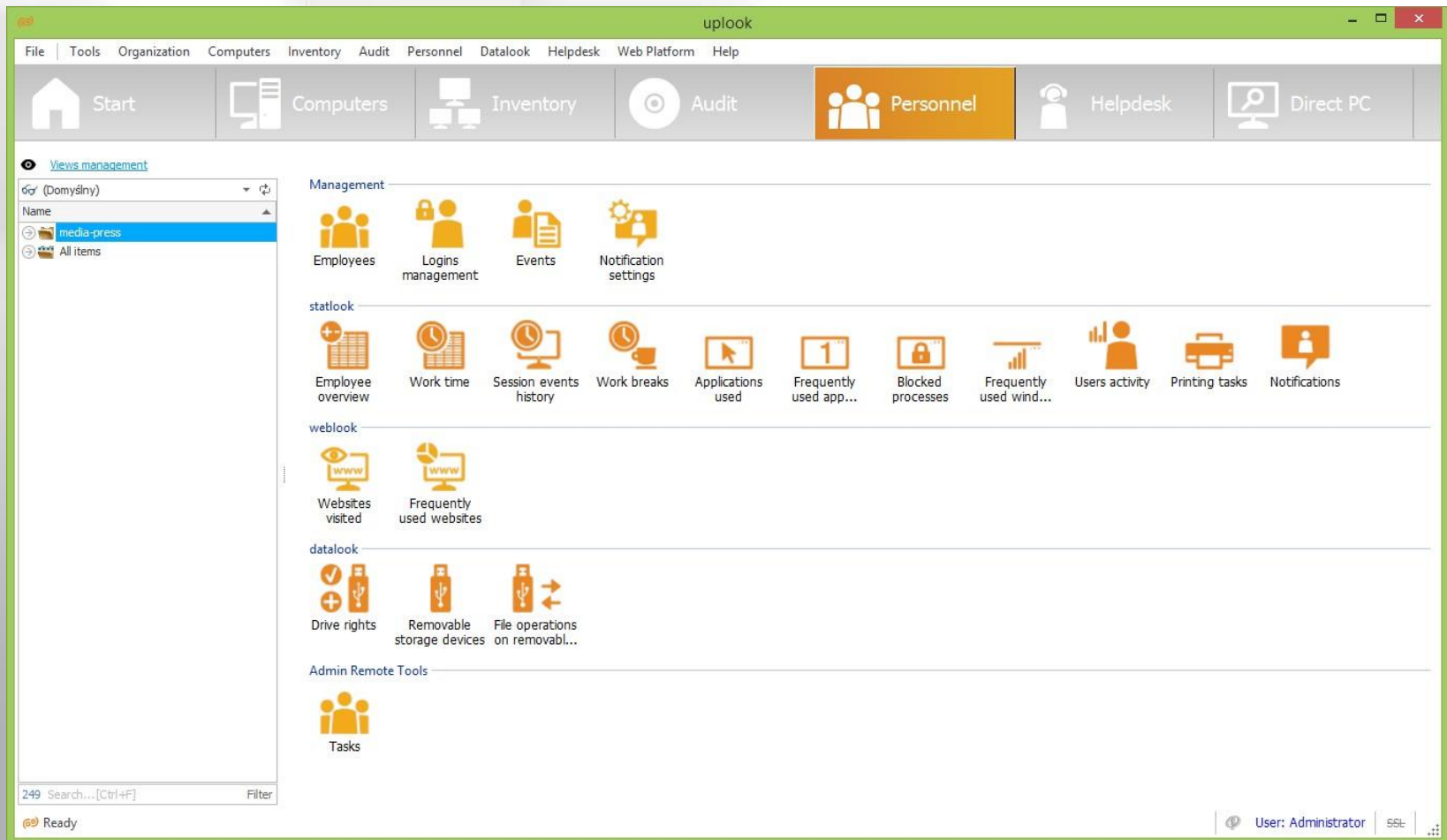
Ready User: Administrator

Software Asset Management

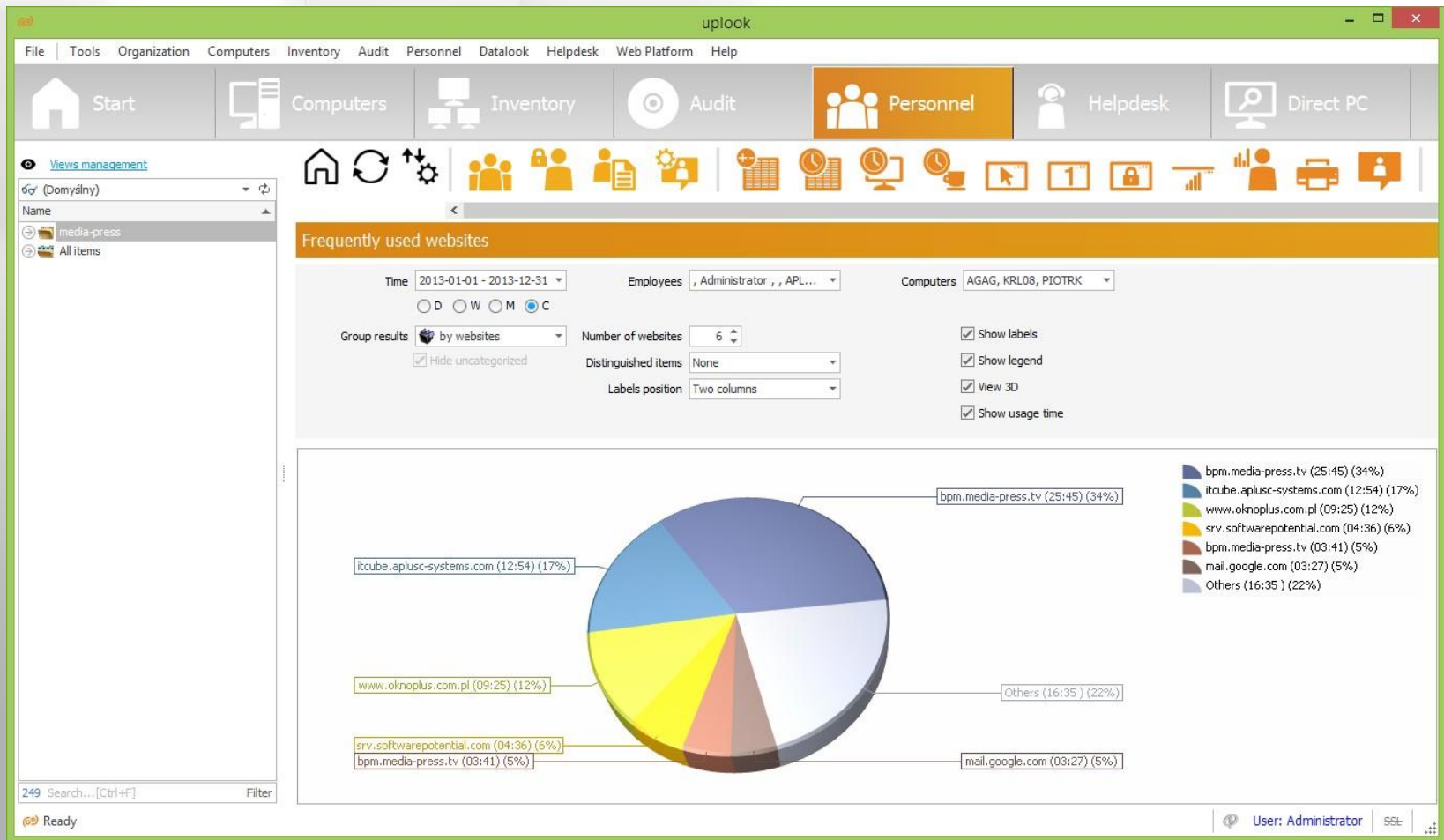
The screenshot displays the 'uplook' application window. The top navigation bar includes 'File', 'Tools', 'Organization', 'Computers', 'Inventory', 'Audit' (selected), 'Personnel', 'Datalog', 'Helpdesk', 'Web Platform', and 'Help'. Below this is a secondary bar with icons and labels for 'Start', 'Computers', 'Inventory', 'Audit', 'Personnel', 'Helpdesk', and 'Direct PC'. The main content area is titled 'Audit: test (2013-03-13 13:43:50)' and includes buttons for 'Refresh list', 'Reports', 'Patterns', and 'Licenses'. A tabbed interface shows 'General', 'Results' (active), 'Whitout license', and 'Statistics'. Below the tabs are checkboxes for 'Show products', 'Show computers', 'Hide OEM', 'Hide non-commercial', and 'Show unused'. A search bar with 'Find' and 'Clear' buttons is present. A table with 12 columns is shown, with a note 'Drag a column header here to group by that column' above it. The table lists various software products with their versions, publishers, types, OS, quantities, and usage. The status bar at the bottom shows 'Ready' and 'User: Administrator'.

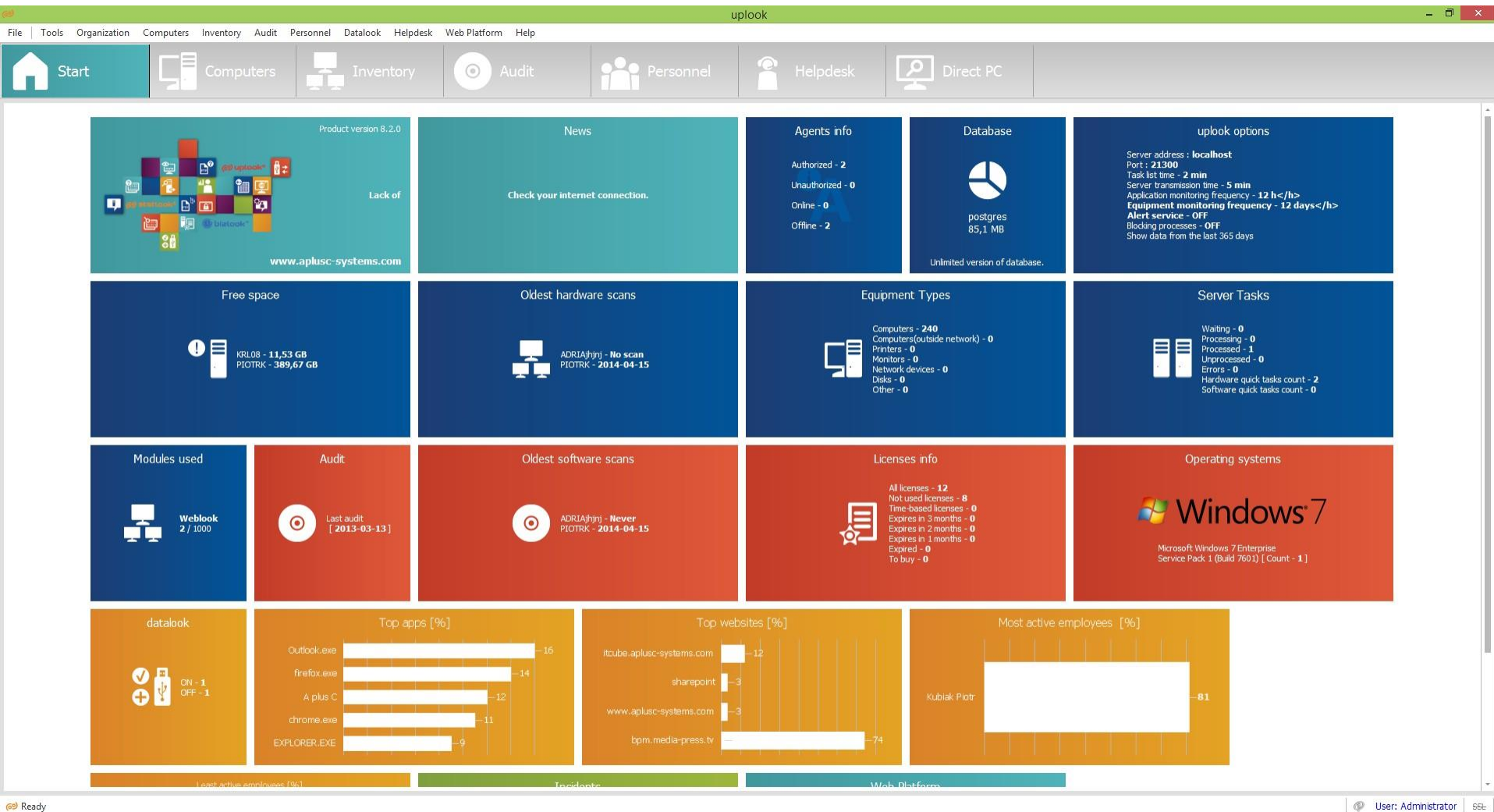
Name	Version	Publisher	Type	OS	Quantity	Used	Balan...	OEM	Non-commercial	Description
Uplink 7	7.x	A plus C Systems	Komercyjna		1	2	-1			
Microsoft Windows 7	Enterprise	Microsoft Corporation	Komercyjna	✓	1	1	0			
CutePDF Writer	2.x	Acro Software Inc.	Komercyjna		1	1	0			
GoToMeeting		Citrix Online, a division of Citrix Systems, Inc.	Komercyjna		1	1	0			
WinRAR		Alexander Roshal	Komercyjna		1	1	0			
Adobe Acrobat Reader	10x	Adobe Systems Incorporated	Darmowa		unlimited	1	0		✓	
pgAdmin	3	PostgreSQL Global Development Group	Darmowa		unlimited	1	0		✓	
VLC Media Player		the VideoLAN Team	Darmowa		unlimited	1	0		✓	
Microsoft Security Essentials	2012	Microsoft Corporation	downgrade		0	1	0			
Adobe Photoshop	CS4	Adobe Systems Incorporated	Komercyjna		5	1	4			
Microsoft Office Enterprise	2007	Microsoft Corporation	Komercyjna		250	1	249			

User Management



Internet Monitoring





statlook – manage your IT & business

Webinars

Meet us online for a quick live-presentation.

We will show and tell you everything you want to know about statlook.

Sign in:

<https://www.statlook.com/webinars>

media-press.tv S.A. Group
1/15 Szymanowskiego Street
30-047 Krakow
Poland

Contact:

Tel. +48 12 34-90-98

richard@statlook.com

www.statlook.com